

## Property Manager Services Guide

### Multi-family Trash, Compost, and Bulky Service Collection Rates Effective July 1, 2024

#### Sample Trash Rates\*

	20 gal	32 gal	64 gal	96 gal	2 CY Bin
Monthly	\$33.08	\$53.88	\$106.99	\$160.19	\$658.04

\*Rates above include the cost for unlimited weekly compost service and one bulky pickup and drop off per unit.

#### Minimum Trash Service:

The Oakland Municipal Code (OMC) requires multi-family property owners to subscribe to the equivalent of no less than 20 gallons of trash service per unit, per week. One cubic yard of service is 200 gallons.

Visit [oaklandrecycles.com/services/service-rates/](https://oaklandrecycles.com/services/service-rates/) for a complete list of rates.

#### Price Per Unit for Recycle:

There is a \$18.67 per unit charge per month for unlimited weekly recycling collection.

#### Minimum Compost and Recycle Service:

Property managers are required to provide adequate compost and recycle collection to collect all recyclables and compostables generated and sorted by residents. Contact WM or CWS to request more carts/bins at no extra cost.

## State and Local Recycling and Composting Laws and Requirements



#### MAINTAIN COMPOST AND RECYCLING SERVICE

You must set up adequate collection service.



#### SORT MATERIALS CORRECTLY

All materials must go into the proper bins: Compost, Recycle, and Trash.



#### MAINTAIN THE CORRECT INDOOR BINS

Place color-coded and labeled compost and recycle bins next to all trash bins.



#### EDUCATE TENANTS

Educate tenants about mandatory sorting at least annually. Inform tenants about the rules no later than 14 days before and after move-in or move-out.

### We Are Here to Help You and Your Residents Compost and Recycle Right.

Oakland Recycles provides onsite technical assistance, signage, residential sorting guides and other free tools to help your residents participate in mandatory sorting and collection of recycle and compost.

Visit [www.oaklandrecycles.com/services/property-managers/](https://www.oaklandrecycles.com/services/property-managers/) for more information.

A residential sorting guide for posting in your building is included on reverse side.



**Trash, Compost & Bulky Drop Off  
& Collection Services**

Waste Management of Alameda County, Inc. (WM)  
510-613-8710



**Recycling Service**

California Waste Solutions  
510-OAKLAND (625-5263)

# City of Oakland Residential Services Guide

## Beyond the Bin

Please follow these instructions to dispose of items that do not fit or belong in any cart or bin. Do not place extra trash in your recycle or compost carts or bins, this contaminates the recycle and compost streams.

### What do I do with extra recycling?

- Break down and bundle extra cardboard (under 3'x3') and place neatly next to recycle cart or bin.
- Visit [resource.stopwaste.org](https://resource.stopwaste.org) for questions about reuse, repair, recycling and safe disposal options.



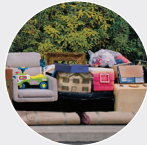
### Reducing the 'ick' factor in sorting compost

- Place shredded paper or cardboard at bottom of containers.
- Place food scraps in a paper bag first, then toss into green compost cart or bin.
- Reduce food waste, only buy what you eat. Visit <https://stopfoodwaste.org> for tips.
- Request a kitchen pail for free! You may pick one up at WM's office at 172 98th Ave., Oakland, 8 am - 6 pm M-F.



### What do I do with extra trash?

- Use the Bulky Junk Drop Off and Pickup Service at no extra cost. Call WM at 1-888-WM-Bulky or visit [OaklandRecycles.com/Bulky](https://OaklandRecycles.com/Bulky) to make an appointment.
- Contact your property manager to increase trash cart size if you have regular overflow in your trash cart or bin.



### Household Toxic Waste

- Take hazardous waste to the Household Hazardous Waste (HHW) Facility at 2100 East 7th Street, Oakland. Limit is 15 gallons/125 pounds per vehicle.
- Call (800) 606-6606 or visit [stopwaste.org/hhw](https://stopwaste.org/hhw) for days and hours of operation.
- Visit [resource.stopwaste.org](https://resource.stopwaste.org) for options in your neighborhood for material specific drop off and recycling.



### Household Batteries & Used Motor Oil

- Put old household batteries in a sealed plastic bag on top of the recycle cart or bin. Tape off all coin batteries.
- Put your Motor Oil Recycling Kit next to the recycle cart. Contact CWS for a free kit.



## Learn More About Your Services at [Oaklandrecycles.com](https://Oaklandrecycles.com)!

- What Goes Where sorting information
- Look up your scheduled pickup day, print or download a personalized calendar
- Play a recycling game or set a weekly pickup reminder.

