

Commercial Services Guide

Commercial Trash and Compost Collection Rates Effective July 1, 2024

Sample rates are for one time per week collection, billed monthly.

	20 gal	32 gal	64 gal	96 gal	2 CY Bin
Trash	\$42.50	\$58.16	\$125.70	\$193.10	\$490.03
Compost	\$31.88	\$43.62	\$94.28	\$144.83	\$367.52

Visit oaklandrecycles.com/services/service-rates/ for a complete list of rates.

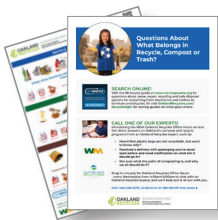
Every business in Oakland must subscribe to enough trash, recycle and compost service to meet weekly generation (Oakland Municipal Code (OMC) 8.28.140). Subscribe to services immediately to avoid fines. For more details on the rules, visit www.oaklandrecycles.com/laws

To order or adjust your trash or compost service contact Waste Management of Alameda County, Inc.
510-613-8700
csnorthbay@wm.com
www.wm.com

Sign Up for Recycle Service.
Please visit www.OaklandRecycles.com/businesses for a list of service providers.

Single family & multifamily recycling is provided by California Waste Solutions.
510-625-5263
OaklandCS@calwaste.com
www.calwaste.com

Property Owners Must Also:



INFORM

Inform businesses, employees, and contractors each year about trash, compost, and recycle rules.

EDUCATE

Train employees to separate trash, compost, and recyclables when they move-in or move-out. Request service brochures to give to tenants at www.oaklandrecycles.com/services/free-tools-resources.

PROMOTE

Post signs, posters, and/or affix labels to bins to ensure the right materials go in the right bins. Order free signs and posters at www.oaklandrecycles.com/services/free-tools-resources. Free help and indoor green bins are also available.

ACCESS

Place trash, compost and recycle bins together both indoors and outdoors & ensure tenants have access to containers. Restrooms are not required to have recycle or compost collection however the City encourages collection of paper towels for composting from restrooms.

Property Owner Responsibility

Property owners must ensure that all occupied property is subscribed to weekly trash, recycle, and compost collection service. Service levels must match the volume of waste generated at each property. The City may start collection service at residential properties if there is no residential trash, recycle or compost collection service found. The City may add the costs of providing these services to the property tax bill if not paid. The City may also fine both commercial property owners and business owners for lack of trash, recycle, and compost service. Fines increase up to \$1,000 per day for lack of collection service.

Know the Rules

1

All occupied property must sign up for trash, compost, and recycle collection services.

Pickups must be at least weekly and more frequently as needed to remove all waste generated. If you own a property, you can apply for a self-haul permit to haul your own trash, compost, and recycling. The application is available at oaklandca.gov/services/apply-for-a-self-haul-permit. Until the City approves a permit, you must subscribe to collection services.

2

In mixed-use properties: Every residential unit must have:

- a. Enough trash, compost and recycle service as needed plus bulky service for each unit. Trash service may not be less than 20 gallons per unit per week.

The business tenants must have:

- a. Enough trash, compost, and recycle service to match need. These services must be separate from what is provided for residents.
- b. Commercial recycling is open market. Choose a recycler from the list at www.oaklandrecycles.com/services/business.

3

The City may require you to increase trash, compost, or recycle service at your property if the property creates more solid waste than what your current bins can hold.

4

The City may establish collection service when residential property owners do not subscribe.

The City will charge the property owner through its franchise agreement with Waste Management of Alameda County. Bills that are not paid, plus administrative fees will be sent to a special assessment that is payable on the property tax roll.

5

The City may refer commercial properties without compost or recycle collection services to the Alameda County Waste Management Authority for enforcement and penalties. For information and resources, visit www.Stopwaste.org/Rules



YOUR RECYCLING TEAM
WASTE MANAGEMENT
CALIFORNIA WASTE SOLUTIONS



Trash and Compost Collection
Waste Management of Alameda
County, Inc. (WM)
510-613-8710