



OTHER SERVICE INFORMATION



Bulky Pickup Services - Available to All Oakland Residents

Single family residents, call WM to schedule your pickup appointment. If your building has 2 or more residences, ask your property manager to call to schedule your pickup. Call WM at 510-613-8710 or schedule online at Oaklandrecycles.com/bulky-pickup-services.

Weekly Compost, Recycling & Trash Collection

Set your carts or bins out curbside by 6 a.m. on your scheduled pickup day, with lids closed and fronts facing the street. Collection service ends at 6 p.m. on your service day.

When Thanksgiving, Christmas or New Year's Day fall on a weekday, pickup will be one day later for the rest of the that week.

NOW AVAILABLE AT OAKLANDRECYCLES.COM! Look up your scheduled pickup day, print or download a personalized calendar, play a recycling game or set a weekly pickup reminder.



Service Options for Disabled and Elderly Customers for Residents of Single-Family Homes

Backyard service is available at no cost for qualifying elderly or disabled residents. Call Waste Management of Alameda County at (510) 613-8710.



Household Hazardous & Toxic Waste



Fluorescent Bulbs, Paints, Stains, Solvents, Thinners, Adhesives, Pesticides, Cleaners, Household Garden and Auto Chemicals, Spray Cans, Electronic Waste, Non-Household Batteries, Syringes

Take these items to the Household Hazardous Waste (HHW) Facility at 2100 East 7th Street, Oakland. Limit is 15 gallons/125 pounds per vehicle.

Call (800) 606-6606 for days and hours of operation.



ADDITIONAL INFO & CONTACTS

Right-Size Your Service

Select the right size carts to meet your needs, and avoid overage charges for excess trash. Contact your service provider to discuss options.



Available Cart Sizes: 20 gal • 32 gal • 64 gal • 96 gal

Recycling Right Starts in Your Home.

Set up separate containers to collect recyclables, compostables and trash in your home.

Avoid contamination charges by placing your separated recyclables, compostables and trash into the correct cart or bin. Check the label.

For additional resources, visit OaklandRecycles.org

Contacts and Important Phone Numbers

Trash, Compost & Bulky Collection Services
Waste Management of Alameda County, Inc.....510-613-8710

Recycling Service
California Waste Solutions.510-OAKLAND (625-5263)

Low-income and Disabled Senior Discount Information
Waste Management of Alameda County, Inc.....510-613-8710

Free Used Mattress Drop-off
DR3 Recycling.....510-351-0520
9921 Medford Ave, Oakland, CA 94603

Report Illegal Dumping
Oakland Public Works Call Center510-615-5566
www.OaklandPW.com Email: opw@oaklandnet.com Mobile app: SeeClickFix

City of Oakland Recycling Hotline.....510-238-SAVE (7283)

Para obtener una copia de este folleto, visita OaklandRecycles.com

Để lấy bản sao của tài liệu này, xin truy cập OaklandRecycles.com

有關此副本宣傳冊，請訪問 OaklandRecycles.com



250 Frank Ogawa Plaza, Suite 5301
Oakland, CA 94612



Residential Compost, Recycle, Trash Services Guide



OAKLANDERS RECYCLE RIGHT!



YOUR RECYCLING TEAM
WASTE MANAGEMENT
CALIFORNIA WASTE SOLUTIONS



RECYCLE

回收 REICLAR TÁI CHẾ

Empty Glass, Aluminum, Metal & Plastic Containers, Beverage & Soup Boxes, Clean Paper & Cardboard

Recycling service required at 5+ unit homes by State law AB 1841.



Used Batteries & Motor Oil

Put old household batteries in a sealed plastic bag on top of the recycle cart or bin.*

*Tape off all coin batteries

Put Motor Oil Recycling Kit next to cart. Contact CWS for a free kit.

Put batteries here.



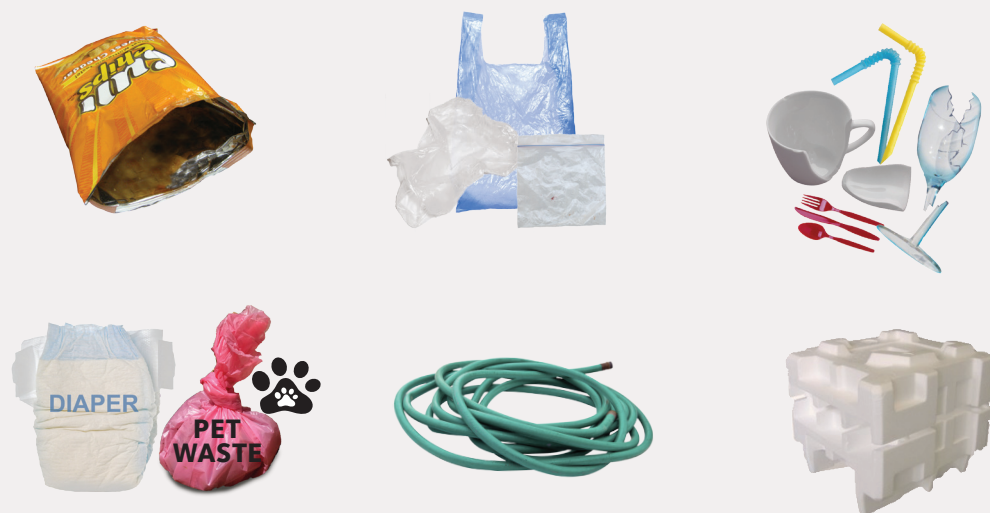
Fold and bundle large cardboard to be under 3'x3'. Place next to cart.



TRASH

垃圾 BASURA RÁC

Non-Recyclables, Non-Hazardous Materials



Used Clothing



Donate gently worn items to a second-hand store or clothing drive. Find one near you at recyclewhere.org

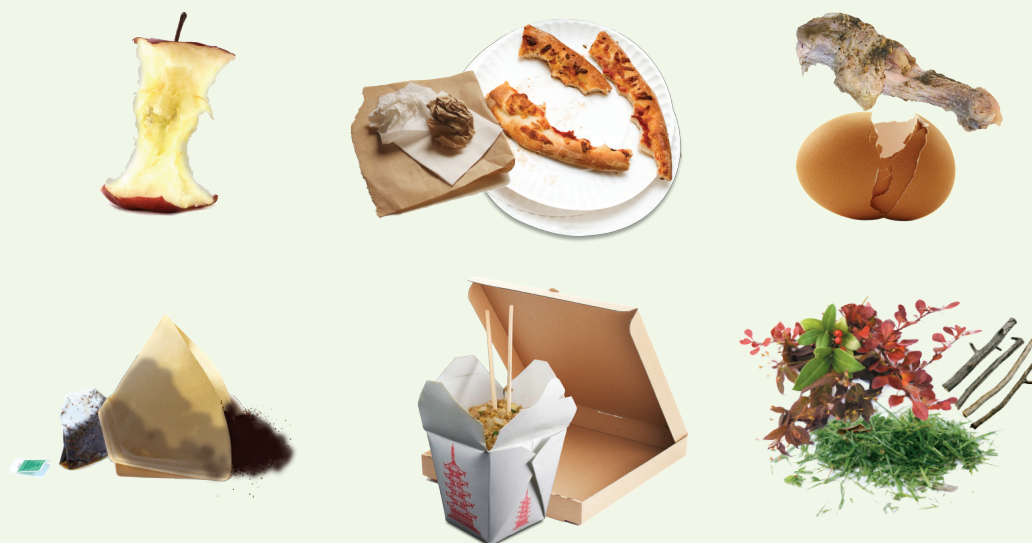


COMPOST

堆肥 ABONO PHÂN HỮU CƠ

Food Scraps, Food-soiled Paper, Plant Debris, Untreated Wood

Compost service required at 5+ unit homes by State law AB 1826.



Food Scraps Collection

Empty food scraps into your green compost cart.



ADDITIONAL COMPOST INFORMATION

Free Holiday Tree Recycling Pickup

Trees are collected curbside during the first two weeks of January on regular pickup day. Only clean trees are accepted:

- No "snow" flocking, stands or decorations.
- Trees must be cut to less than 4' tall.
- If you miss the holiday tree collection, follow Extra Yard Debris instructions below.



Extra Yard Debris

- Tie or bundle branches (must be less than 4' long and 6" across).
- Use large paper gardening bags available at most hardware stores (or purchase directly from WM).
- Use your own extra container (cannot exceed 75 pounds or contain dirt).
- Set out next to Compost Cart for pickup.

Note: Plant debris set out in a plastic bag will be charged as extra trash collection.



Don't Pour Fats, Oils, and Grease (FOG) Down the Drain!

FOG is a natural part of our food. FOG includes: cooking oils, shortening, dairy products, sauces and salad dressings. FOG blocks sewer lines and may cause overflows into your property, your neighborhood and the Bay.

Follow these tips from the City of Oakland and East Bay MUD

- Pour cooled FOG into an empty milk carton or other sturdy paper container
- Remove remaining FOG by scraping greasy pans and absorbing oil with a paper towel
- Dispose of these items in your compost cart. To drop off large amounts of used cooking oil, or for more information about FOG, visit www.oaklandnet.com/FOG or call the EBMUD Environmental Services Hotline at (510) 287-1651.



NO PLASTIC BAGS. KEEP RECYCLING LOOSE.

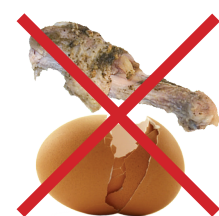


TRASH IT

DO NOT PUT IN RECYCLE

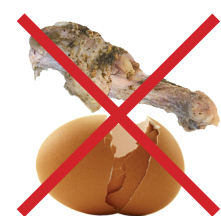


TRASH IT



COMPOST IT

KEEP OUR STREETS CLEAN. BAG YOUR TRASH.



COMPOST IT

DO NOT PUT IN TRASH



RECYCLE IT



HHW

DO NOT USE CONVENTIONAL PLASTIC BAGS. ONLY BPI CERTIFIED PLASTIC, PAPER BAG OR NEWSPAPER ACCEPTED.



TRASH IT

DO NOT PUT IN COMPOST



TRASH IT



RECYCLE IT

RECYCLE RIGHT - AVOID A CONTAMINATION SURCHARGE

When you place the right materials in the right cart, it benefits you and your community, and protects the environment. When you place the wrong materials in a cart, it can harm the environment and injure workers.

A compost or recycling cart found with the wrong materials may be **tagged** (example of tag shown). See below for when surcharges may apply.



INCIDENT	1-2	3 Within 6 mo. of 1st incident	4 Within 6 mo. of 3rd incident	5+ Within 6 mo. of 4th incident
RESULT	\$0	\$25	\$50	\$50

The service hauler can refuse to collect carts containing the wrong materials, and may apply contamination surcharges if the cart is serviced. Learn more at OaklandRecycles.com



OaklandCS@calwaste.com
510-Oakland (625-5263)



csnorthbay@wm.com
510-613-8710



csnorthbay@wm.com
510-613-8710